

# monterey

A chair that has evolved from sophisticated design, the Monterey is beautifully proportioned and extremely comfortable. A milestone in ergonomic seating, it not only conforms to individual body shapes and weights, but also to movement. The titanium frame and base make it built to last and designed to enhance any office space.

## specifications

### Overall Dimensions

26" x 27.6" x 40.9-43.7"  
(W x D x H)

### Seat

20" x 20" (W x D)

### Back

20" x 23.6" (W x H)

### Seat Height

19.7" (at lowest point)  
22.5" (at highest point)

### Weight

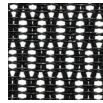
66.5 lbs

### Cube

11.4

## standard colors

### black mesh PM01



## mesh seat

**MMSY55**

**\$830**

## option

**Headrest**

**HRAP99**

**\$59**



## features

### Tilt Tension Control

Recline rate adapts to weight of user.

### Tilt Lock

Locks out tilt function.

### Synchro-Tilt

Back reclines in a preset ratio to seat.

### Seat Height Adjustment

Sets seat height to desired position relative to floor.

### Waterfall Seat

Front of cushion slopes to reduce pressure on the back of the knees.

### Seat Depth Adjustment

Adjusts seat depth relative to back.

### Arm Height Adjustment

Adjusts arm up or down for proper ergonomic positioning while seated.

### Lumbar Adjustment

### Black Titanium Frame and Base



**eurotech**  
a raynor group company

**1.800.637.0005**

email: [customerservice@raynorgroup.com](mailto:customerservice@raynorgroup.com)  
catalog requests: [literature@raynorgroup.com](mailto:literature@raynorgroup.com)