

The Eurotech 4x4 is an economical, yet comfortable series of chairs that provide all-day comfort with its molded contoured cushions and ergonomic features.

specifications

Overall Dimensions

29.5" x 26" x 37-40.5"
(W x D x H)

Seat

20" x 19 (x3)* (W x D)

Back

19" x 20 (x3)* (W x H)

Seat Height

18" (at lowest point)
21.5" (at highest point)

Weight

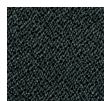
60 lbs

Cube

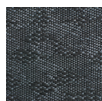
6.0

standard colors

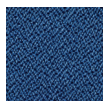
Black AT33



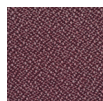
Charcoal H5511



Navy AT30



Burgundy AT31



49802A
\$520



features

Tilt Tension Control

Recline rate adapts to weight of user.

Center-Tilt

Chair tilts from a point under the center of the seat allowing you to rock. Tension adjustable.

Tilt Lock

Locks out tilt function.

Back Angle Adjustment

Sets back angle for personalized comfort in reclined position.

Seat Height Adjustment

Sets seat height to desired position relative to floor.

Waterfall Seat

Front of cushion slopes to reduce pressure on the back of the knees.

Forward Seat Tilt

Changes angle of seat to enable proper ergonomic posture while using computer keyboard.

Width Adjustable Arms

Adjusts arms in or out for proper ergonomic positioning.

Arm Height Adjustment

Adjusts arm up or down for proper ergonomic positioning while seated.

Seat Angle Adjustment

Seat angle will lock in any position from front to back.

Ratchet Back height Adjustment

Backrest easily adjusts up or down relative to seat for personalized lumbar region support and comfort.

eurotech
a raynor group company

fabrix | custom
upholstery

FABRIX 1
\$610

FABRIX 2
\$640

FABRIX 3
\$695

C.O.M. YARDAGE
1.70

1.800.637.0005

email: customerservice@raynorgroup.com
catalog requests: literature@raynorgroup.com